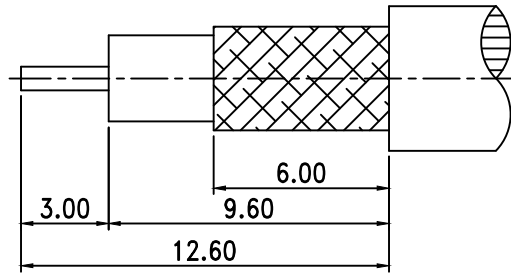
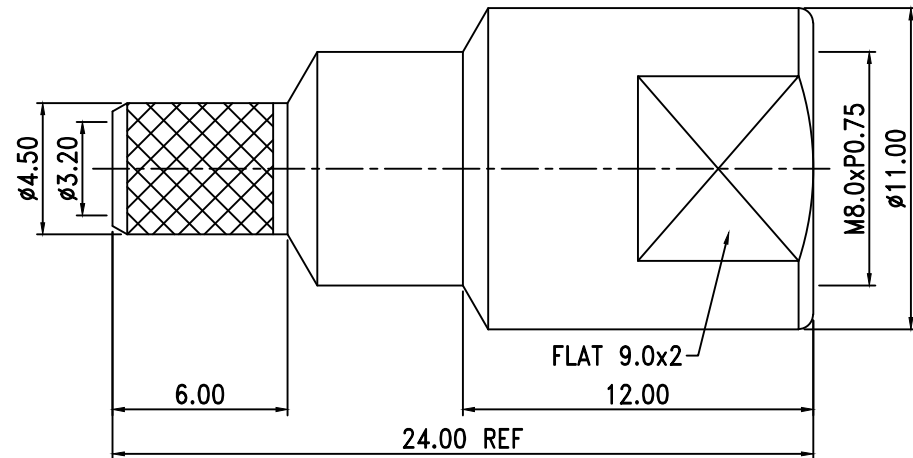
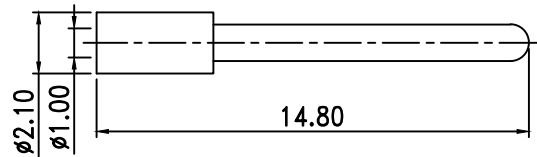
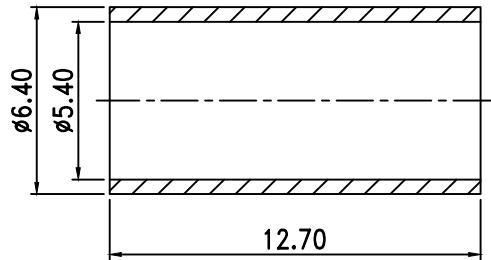


REVISION

REV	DATE	DESCRIPTION
△	12/11/15	INITIAL



RECOMMENDED  
CABLE STRIPPING DIM'S



4.	Ferrule	Brass	1	Nickel
3.	Insulation	Teflon	1	None
2.	Pin	Brass	1	Gold
1.	Body	Brass	1	Nickel
NO.	DESCRIPTION	MATERIAL	Q' TY	FINISH

TOLERANCE	
.X	+/- 0.2
.XX	+/- 0.1
.XXX	+/- 0.05
ANGLE	+/- 0.5

UNITS	mm
SCALE	NTS
SIZE	A
SHEET 1 OF 1	

DRAWN BY:	CHECKED BY:	APPROVED BY:	CAD FILE
23-07F-2-DGN			
DESCRIPTION			
FME MALE CRIMP FOR TCC CABLE GROUP "F"			

PROPRIETARY AND CONFIDENTIAL  
THE INFORMATION IN THIS DRAWING IS THE SOLE PROPERTY OF  
TCC INDUSTRIES, INC. ANY REPRODUCTION IN PART OR AS A  
WHOLE WITHOUT THE WRITTEN PERMISSION OF TCC INDUSTRIES,  
INC. IS PROHIBITED.



**TCC INDUSTRIES INC.**

7050 Village Drive unit E, Buena Park, CA 90621-2282  
Tel. 714.523.8885 - FAX. 714.562.0888  
E-Mail: info@tccinc.com Website: www.tccinc.com